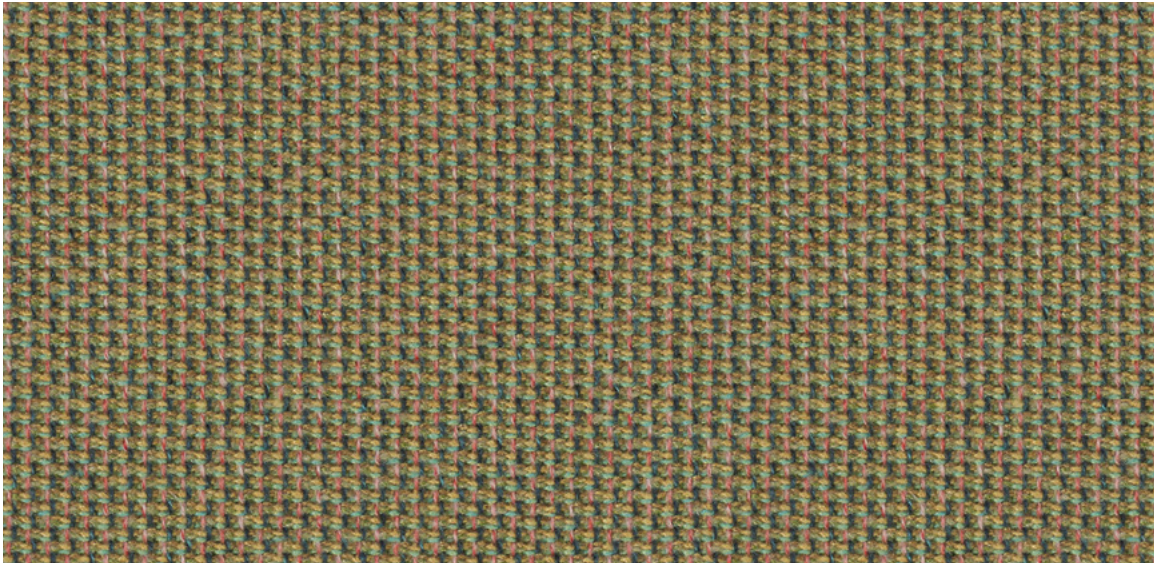


56 Cyber. **Wilkhahn**



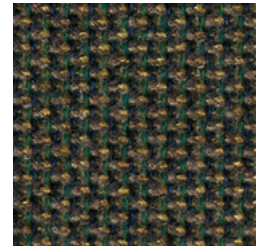
56/1701



56/1102



56/2301



56/1302



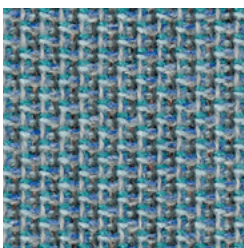
56/2901



56/1901



56/3101

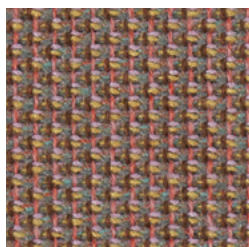


56/2401

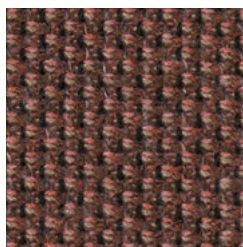


56/1601

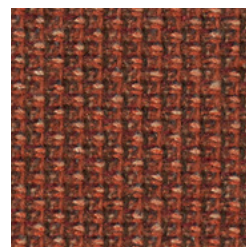
56 Cyber.



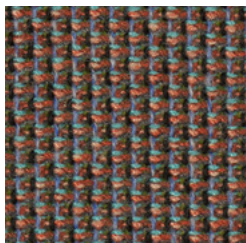
56/1201



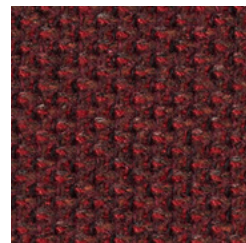
56/2701



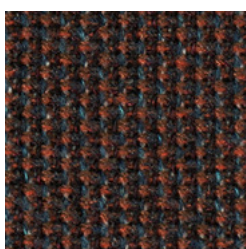
56/2201



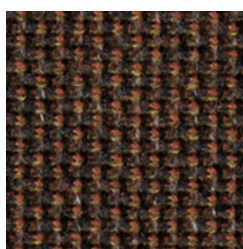
56/1401



56/2801



56/1501



56/1801



56/1101

Die digitalen Muster weichen von den Originaltönen ab.
The digital sample colours differ from the originals.
Les échantillons numériques diffèrent du nuancier original.
Los tonos de colores de las muestras en formato digital, varían de los originales.

Beschreibung

100 % post-consumer recycled Polyester
570 g/lf.d. m
Breite 140 cm

Prüfungsergebnisse

Scheuerfestigkeit:
120.000 Scheuerhübe,
BS EN ISO 12947-2 (Martindale)
Lichtechtheit:
7-8, BS EN ISO 105-B02
Pilling:
4-5, BS EN ISO 12945-2
Reibechtheit:
Trocken 4-5, Nass 4-5
EN ISO 105-X12
Flammschutz:
EN 1021 1&2 (CMHR)
CA TB 117-2013
Schwerentflammbarkeit
hängt vom verwendeten
Schaum ab.

Reinigung

Festverspannte Bezüge:
Regelmäßig absaugen, professionelle
Trockenreinigung.

Abnehmbare Bezüge:

**Description**

100 % post-consumer recycled polyester
570 g/lin. m
width 140 cm (55")

Test results

Abrasion resistance:
120,000 rubs,
BS EN ISO 12947-2 (Martindale)
Lightfastness:
7-8, BS EN ISO 105-B02
Pilling:
4-5, BS EN ISO 12945-2
Fastness to rubbing:
Dry 4-5, wet 4-5
EN ISO 105-X12
Flame retardancy:
EN 1021 1&2 (CMHR)
CA TB 117-2013
Flame retardancy
depends on
the foam used.

Cleaning

Permanent covers:
Vacuum regularly,
have dry cleaned.

Replaceable covers:

**Description**

100 % polyester recyclé post-consommation
570 g/m. L
Largeur 140 cm

Résultats des essais

Résistance à l'abrasion :
120 000 frottements,
BS EN ISO 12947-2 (Martindale)
Résistance à la lumière :
7-8, BS EN ISO 105-B02
Boulochage :
4-5, BS EN ISO 12945-2
Résistance au frottement :
Sec 4-5, humide 4-5
EN ISO 105-X12
Inflammabilité :
EN 1021 1&2 (CMHR)
CA TB 117-2013
L'inflammabilité
dépend de la mousse
utilisée.

Nettoyage

Housses tendues :
aspirer régulièrement,
nettoyage à sec professionnel.

Housses amovibles :

**Descripción**

100 % poliéster reciclado post-consumo
570 g/lin. m
Ancho: 140 cm

Resultado de los test

Resistencia a la abrasión:
120.000 golpes,
BS EN ISO 12947-2 (Martindale)
Resistencia a la luz:
7-8, BS EN ISO 105-B02
Pilling:
4-5, BS EN ISO 12945-2
Resistencia a la fricción:
Seco 4-5, húmedo 4-5
EN ISO 105-X12
Protección contra llamas:
EN 1021 1&2 (CMHR)
CA TB 117-2013
La capacidad inflamable
depende de la espuma
utilizada.

Limpieza

Tapicería fija:
aspirar regularmente,
limpieza profesional en seco.

Tapicería intercambiable:



50851000 - BH

Wilkhahn Germany

Wilkening + Hahne GmbH+Co. KG, Fritz-Hahne-Straße 8, 31848 Bad Münder

Wilkhahn worldwide

Australia, Belgium, China, Deutschland, España, Hong Kong, Japan, Maroc, Nederland, Österreich, Polska, Schweiz, Singapore, South Africa, United Arab Emirates, United Kingdom, United States of America

wilkhahn.com